



Steeton Primary School

UKS2



Summer 1 Newsletter 2024

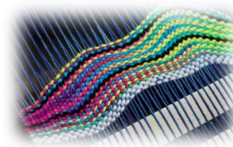
Conscious clothing

History and Geography this half term will be linked to sustainability. Children will carry out in-depth study into sustainable and non-sustainable clothing, looking into both natural and synthetic materials and the negative impact of fast fashion. Children will work towards answering the big question: **'What is meant by 'fast fashion' and what impact are synthetic materials having on the environment?'**



Magic Monday

We will be focusing on DT this half term and designing and making a product using a new skill - weaving. With sustainability in mind, we will endeavour to use recycled materials. We will spend some time weaving using different materials like paper, wool and fabric. Our product will either be a bookmark or coaster.



English

A new term means new books on our reading scheme. Children are able to choose a book to enjoy at home and read in school. Make sure to take a look in their book bags and enjoy sharing these at home.

During English lessons, will be studying non-fiction writing to link with our sustainability topic. Children will look at non-chronological reports, persuasive writing and letters. Children will learn about what makes a piece of writing formal and informal and techniques we can use to persuade others.



Science

Our topic for this half term is Properties and Changes of Materials. Children will compare and group together everyday materials on the bases of their properties including: hardness, solubility, transparency, electrical and thermal conductivity and response to magnets. Children will carry out experiments to understand that some materials dissolve in liquids and how we can recover a substance from a liquid. Children will give reasons for particular uses of everyday materials including wood, metal and plastic. Children will consider whether a change to a material is reversible or irreversible.



Pupil Offer / Dates for Your Diary

10.4.24 - School closed for Eid

18.4.24 Road safety sessions

22.4.24/24.4.24 Parents consultation evenings

13.5.24 SATs week all week

For year 6, buddies will resume next half term on the second week back for the rest of the half term.

Fitness will be every Wednesday for Silver Birch class and every Friday for Holly class. PE will be every 3rd Wednesday - please see timetable on next page

Summer 1	PE LESSON	Computing	Music
10.4.24	School closed for Eid		
17.4.24	ASH	SILVER BIRCH	HOLLY
24.4.24	HOLLY	ASH	SILVER BIRCH
1.5.24	SILVERBIRCH	HOLLY	ASH
8.5.24	ASH	SILVER BIRCH	HOLLY
15.5.24	HOLLY	ASH	SILVER BIRCH
22.5.24	SILVERBIRCH	HOLLY	ASH

Summer 2	PE LESSON	Computing	Music
5.6.24	ASH	SILVER BIRCH	HOLLY
12.6.24	HOLLY	ASH	SILVER BIRCH
19.6.24	SILVERBIRCH	HOLLY	ASH
26.6.24	ASH	SILVER BIRCH	HOLLY
3.7.24	HOLLY	ASH	SILVER BIRCH
10.7.24	SILVERBIRCH	HOLLY	ASH
17.7.24	ASH	HOLLY	SILVERBIRCH